

Hygiene closure systems and elastic side panels

From a modular structure to individual designs



What connects us?

A passion for closure systems and elastic side panels that offer the best functionality in every situation.

You manufacture baby diapers or incontinence briefs? We deliver the right closure system as well as elastic side panel. Whether a modular system or tailor-made, whether self-adhesive or mechanically closing: our closure solutions optimally complement your products and ensure a secure fit and the highest wearing comfort.

With our international production sites and a global sales network we are available for you worldwide to develop the best possible solution for you. With highly motivated employees, more than 50 years of experience, and development know-how, DIN-certified processes and a sustainable production.

With precision to success

More process reliability, profitability and comfort thanks to technologically sophisticated products.

You aim at increased process reliability? You wish to produce more economically? You strive for the perfect fit of your diaper? Do you want outstanding elasticity? Benefit from modern and innovative closure systems and elastic side panels that perfectly match your planned application.

With modular closure solutions that can be integrated easily into your production process, we support you with technical support on site.

Your satisfaction is our top priority

Our closure systems and elastic side panels withstand high mechanical loads and can be refastened without problem. They are flexible, skin-friendly and retain reliably. Thus guaranteeing your satisfaction with your product. And the quality of life of the users of your products increases worldwide.

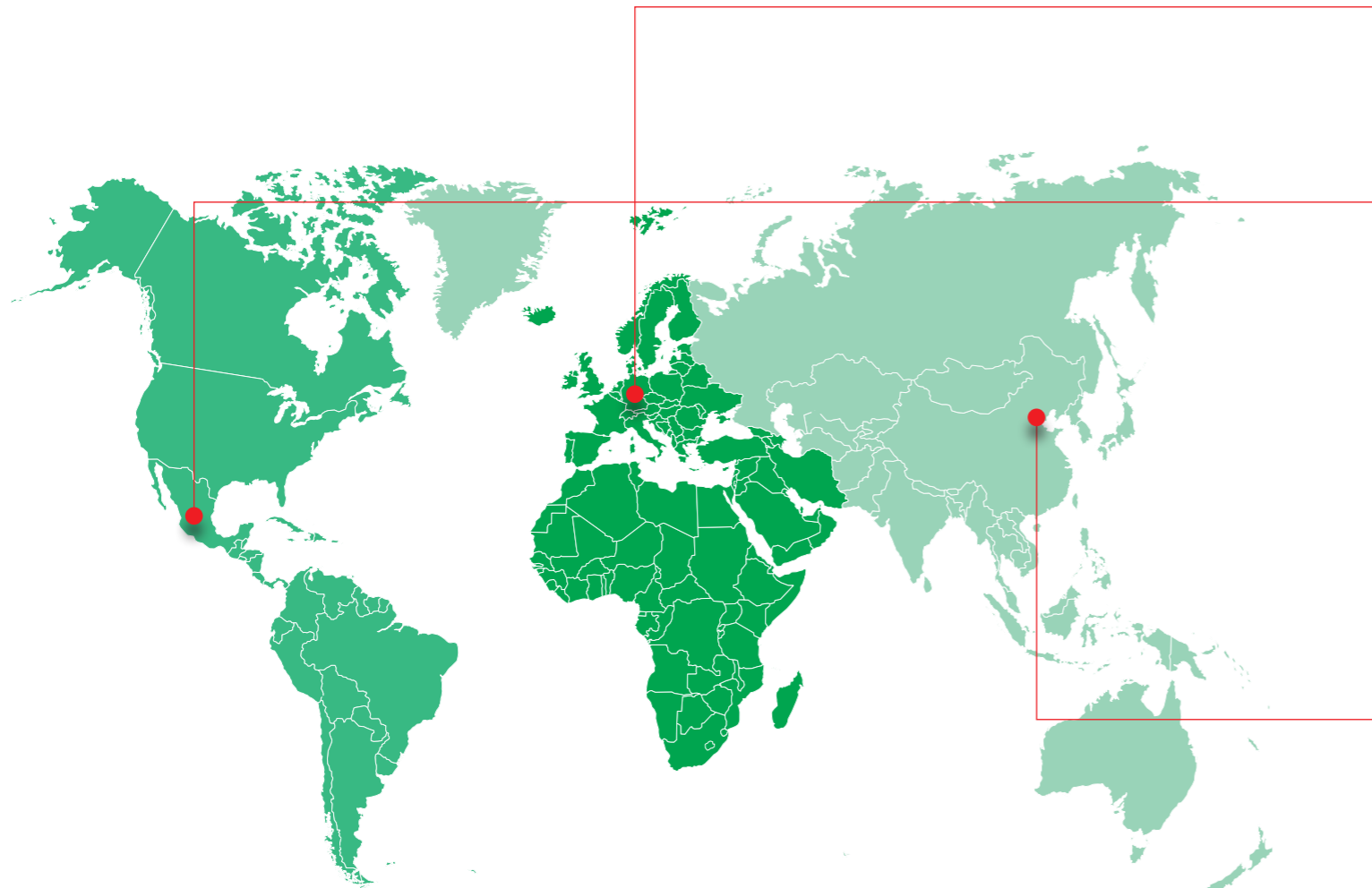


Global Competence

With international production plants and a worldwide distribution network, we are present in all markets.

We think globally and act locally. You benefit from technical support and advice that is quickly available on the spot. At our locations in Altendorf (Germany), Guadalajara (Mexico) and Tianjin (China), around 600 highly qualified employees work every day to produce perfect products for you by means of the most modern

production processes. And, adapted to regional market requirements, to deliver them worldwide. This immediate proximity to the customer has made us one of the world's leading manufacturers of hygiene closure systems.



Headquarters in Altendorf, Germany

Our core competencies are bundled at our location in Altendorf, Germany: This is where our R&D and innovation work takes place in state-of-the-art laboratories. In addition to the production of our global portfolio, the core business is elastic products, mechanical tapes and elastic laminates. We also advise and support our global subsidiaries on specific topics – an efficient mix of sales, development and support.

- Serving the regions of Europe, Middle East and Africa
- Certified according to DIN EN ISO 9001:2015, DIN EN ISO 14001:2015 and DIN EN ISO 50001:2018

Production site in Guadalajara, Mexico

Since 2006, we have been developing self-adhesive closure systems for baby diapers and incontinence briefs at our production site in Mexico. In 2010 the production of mechanical combined closure systems was added. Thanks to the central location, customers from all parts of America benefit from local safety stocks and short delivery times. Investments in state-of-the-art machinery and a sophisticated test laboratory make Lohmann-Koester Mexico the ideal partner when it comes to special tailor-made solutions.

- Serving the regions of North, Central, Latin America and the Caribbean
- Certified according to DIN EN ISO 9001:2015

Sales location in Tianjin, China

The location was founded in 2006 in order to cope with the strong market growth in Asia and the Pacific region. Ideal storage options, an efficient logistics chain and an extensive sales network guarantee our customers the best possible service. Our contact persons are available on the spot at any time.

- Serving the Asia and Pacific regions



Quality on which you can rely

Highly motivated employees, certified processes and a sustainable production.

With our closure systems and elastic side panels, we set the highest production standards. We are also aware of the high level of responsibility in our actions. This already starts with the choice of our partners: We work with companies that produce in accordance with the highest environmental standards and adhere to the highest hygiene and safety standards. In our production we mainly use solvent-free and siliconized carrier materials as well as environment-friendly adhesives.

Experienced experts work every day to support you with their know-how. With the greatest passion, innovative power and with the help of an efficient quality management system that meets the highest international standards since 1996. Because since we began manufacturing hygiene closure systems over 50 years ago, we know one thing: Only uncompromising quality has future.



We guarantee the highest quality due to most modern production facilities.



In accordance with the quality and environmental management system, Lohmann-koester is certified according to DIN EN ISO 9001:2015, DIN EN ISO 14001:2015 and DIN EN ISO 50001:2018.



We ensure a consistent product quality at each of our production facilities by means of modern machines and complex test procedures.



Our experts accompany you on the way to the perfect tailor-made product.

Green at Lohmann-koester

Focusing on sustainability.

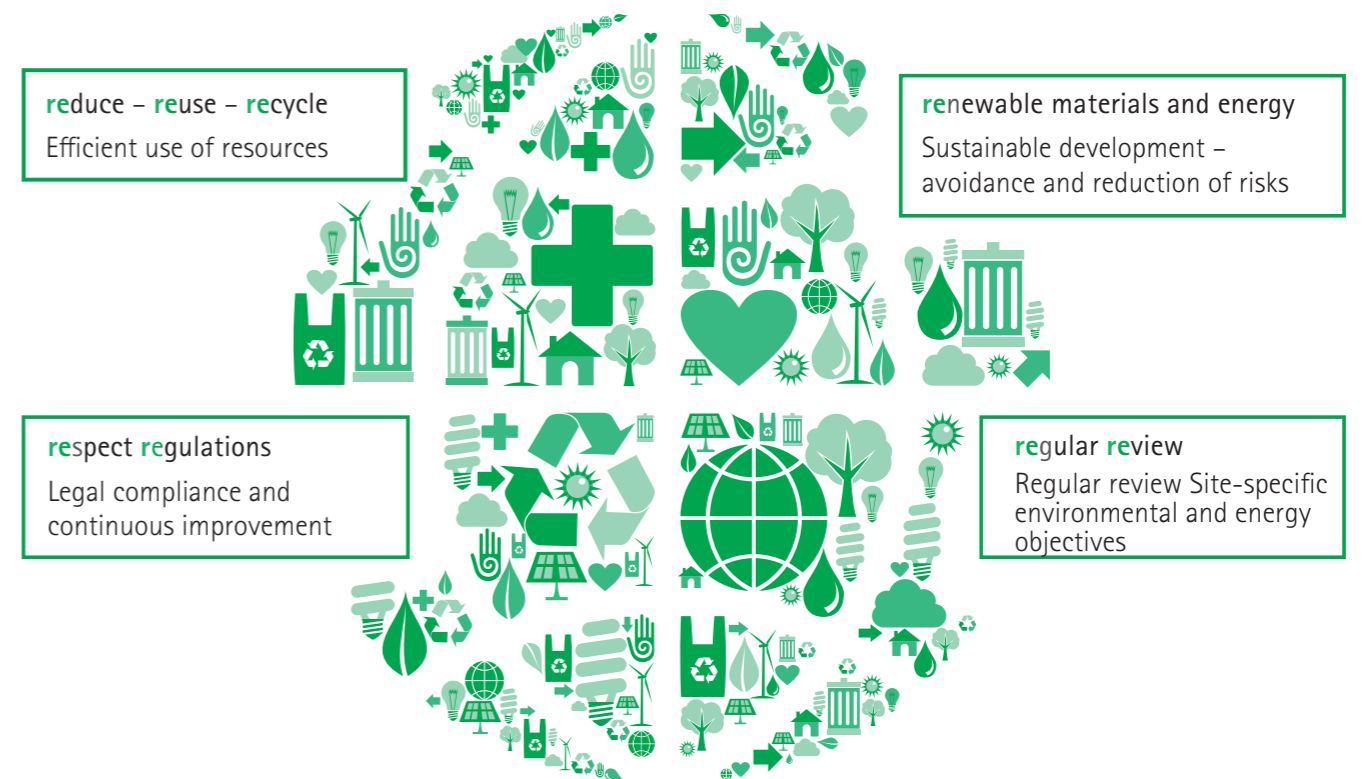
Lohmann-koester regularly monitors and evaluates the site-specific environmental effects and energy aspects, especially in the areas of production, supply and disposal, logistics, development and procurement.

We also undertake to comply with the relevant environmental and energy legislation and other requirements to continuously improve environmental protection and the energy-related performance as well as avoidance of environmental pollution.

We optimize our production processes in respect to the lowest possible use of resources. We regularly control the environmental impact of emissions and waste and are continually working on reducing them further. We support the acquisition of energy-efficient products and services.

We define concrete, location-specific environmental and energy goals in the management system, determine effective measures there and continuously evaluate their status and adequacy.

When developing new products or production processes, we take the associated environmental impact into account at an early stage and try to utilize raw materials that are less harmful to the environment and to use alternatives.

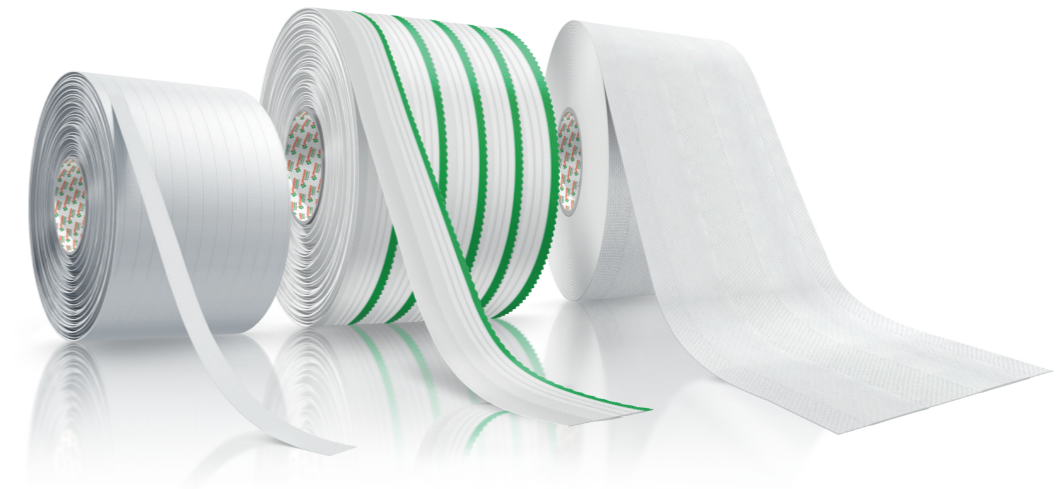
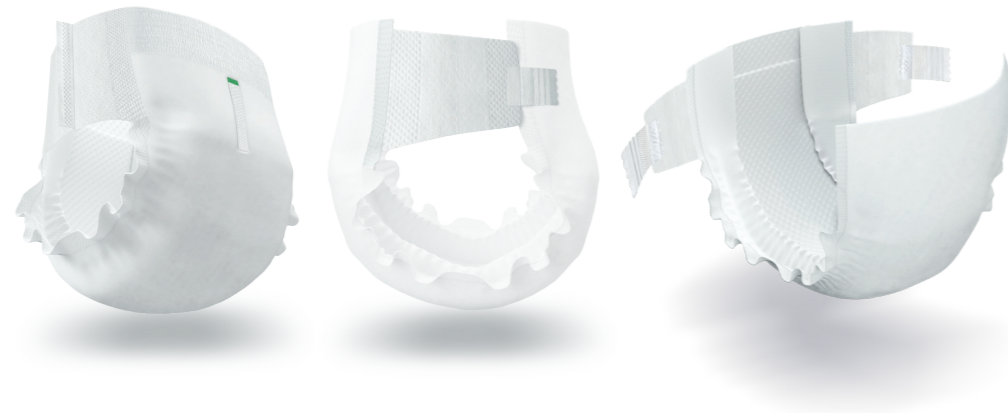


What distinguishes us

In four process steps to a closure system that is perfectly adapted to your needs.

Many ways lead to the right product. We find the best solution by being in constant dialogue with you. Because we consider customer orientation to be our core competence and therefore focus entirely on you and what you need. We see ourselves not only as a supplier,

but as an active partner. And regardless of whether it is a modular or individual solution: Mutually, we will develop a closure system that simply suits you perfectly.

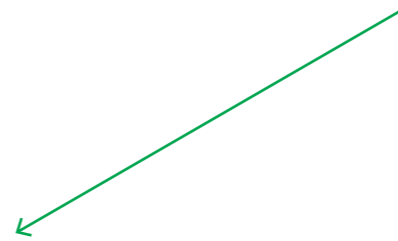


Application

The starting point for every closure system is the detailed knowledge of the specific application. This is precisely where our product development supports you with experience and know-how. We show you the possibilities and alternatives of product components and technical properties and define the desired technical design together with you.

Products

In addition to our tried and tested standard portfolio, we develop customer-specific solutions for you.



Process support

Essential for an efficient closure system is the perfect integration into your production process. Our competent contact persons worldwide support you with advice and assistance directly on site so that your new product runs efficiently on your machine.



Infrastructure

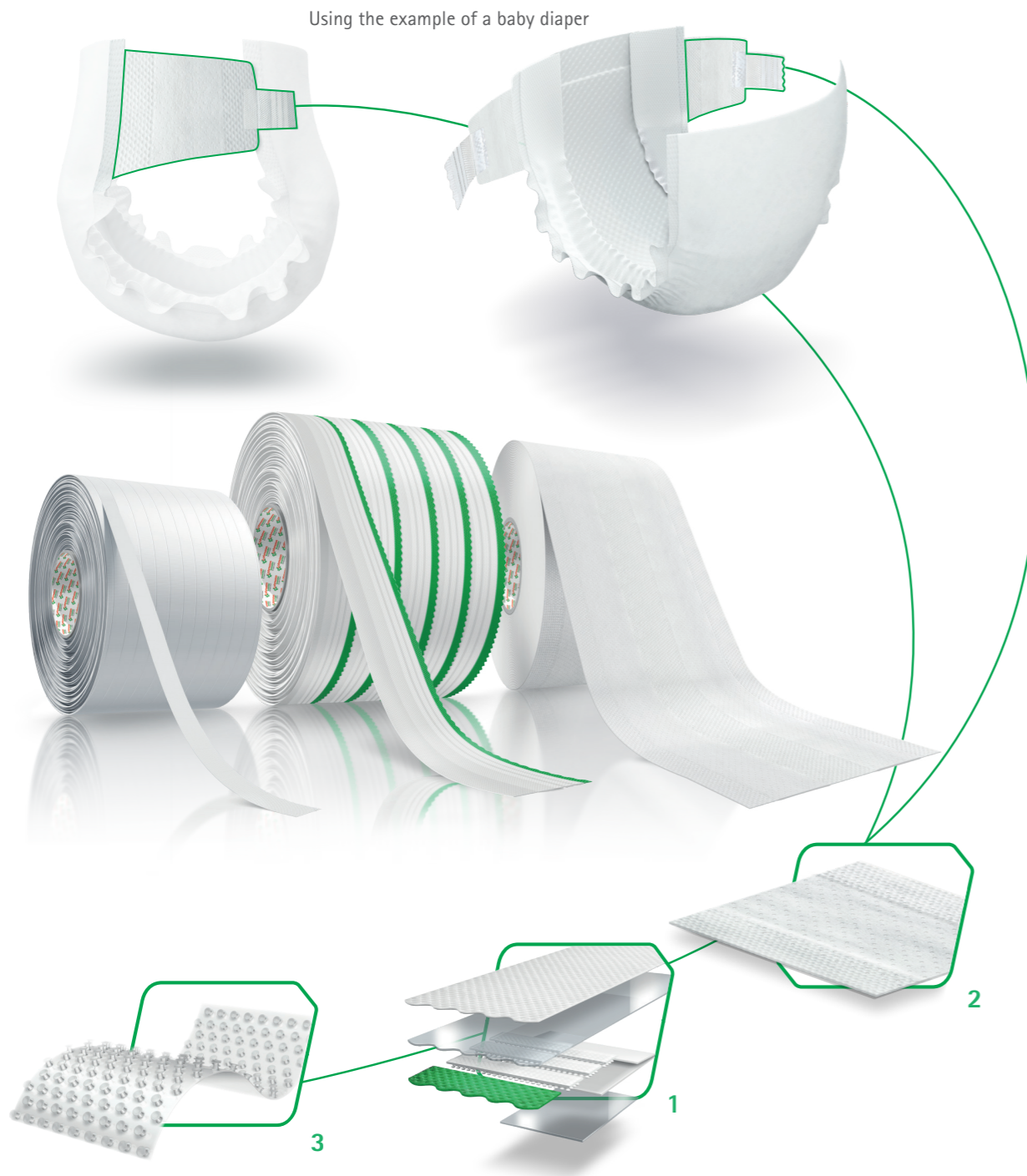
We are always available to you as your contact partner and offer numerous services. Starting with the maintenance of a consignment warehouse, via EDI services to safety stocks for a maximum flexibility.

Our product portfolio

Sophisticated, versatile and well-proven in practice.

Our modular closure and elastic side panels guarantee optimal functionality in all situations. They have been tried and tested for years and keep their promises in every application. From elastic and comfortable diaper side panels with soft nonwoven layers and the matching mini tapes for baby diapers, to multi-layer

solutions with or without elastic components for incontinence products. They are innovative, of the highest quality and made from the best raw materials: Our broad and modular product portfolio in field of baby diapers and incontinence products enables you to perfectly cover all areas of application.



Closure systems for baby diapers

When it comes to discovering new territories, the tiniest tots are the greatest explorers. With curiosity and a zest for action, they explore their own mobility every day. Therefore it is good when the diapers fit so precisely that really nothing goes astray – and at the same time remain flexible enough to accompany every movement of the baby "at close range". With our innovative developments for diaper closures, putting on the diaper is child's play.

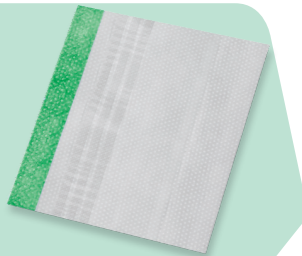


Closure systems for incontinence products

Those who wish to enjoy freedom of movement and maintain their social contacts well into old age do not want to be hindered by physical restrictions. This places particular demands on incontinence products. Reliable support, easy handling and problem-free recloseability – our closure systems meet all these demands.

1. Mechanical and adhesive closure systems

- 1-, 2- and 3-layer
- Elastic and non-elastic tapes
- Soft nonwoven backing
- Combi Tapes: optimal closure possibilities by means of a combination of hook and adhesive zones
- Strong hold even when repeatedly opened and closed
- High tensile, peel and shear strength
- Perfect hooking function thanks to FlexHook® Lines, also available with ProHook®



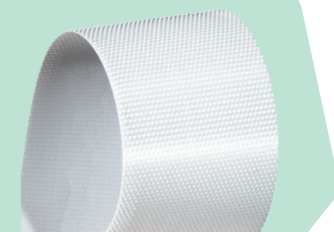
2. FlexEar® – Elastic side panels

- Elastic diaper side panels for baby diapers and incontinence products
- All elastic side panel materials are also available with the product feature **Breeze**, for optimal breathability
- Pull-ups
- Highest elasticity
- Unique retractive force
- Exceptional softness



3. Single components

- ProHook® hooks
- Adhesives
- Single rolls
- For a wide variety of applications
- Available as raw material



Our individual solutions

Lohmann-koester offers the complete expertise from a single source.

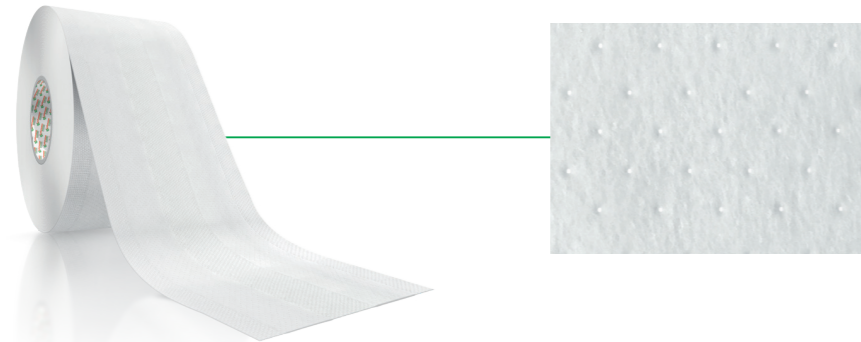
Customized solutions belong to our DNA. Beginning with defining your needs and requirements on the finished closure system, we accompany you with advice and assistance.

With all of our competences. Whether coating, laminating, extruding or siliconizing foils, papers, thermoplastic elastomers, nonwovens or foams. And of course, all this also in-house.

Adapted to your needs.



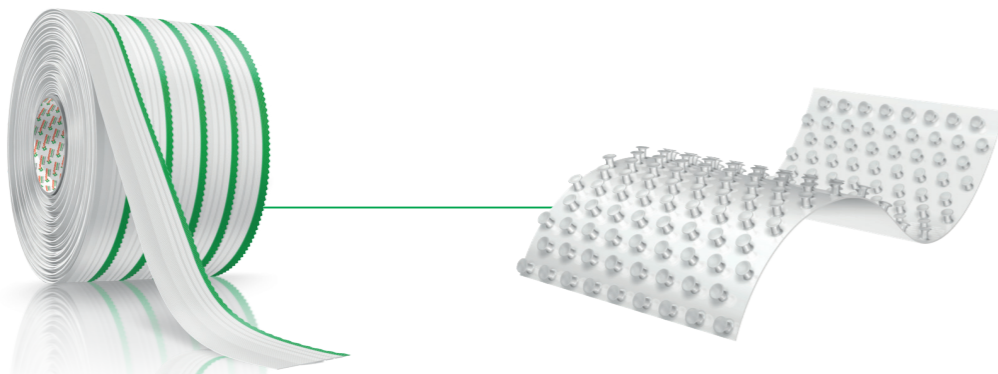
FlexEar®
Breeze



Breathable design of our FlexEar® product family



Flexible
ProoHook®



Tapes for hook-to-backsheet solutions with ProHook®



We know what the closure of your product must be able to do. From the first design to the finished diaper closure system, we develop a solution that fits your individual product perfectly.

The best solution is the solution
that exactly fits your application.

How do we find it?

By advising and supporting you.

From the initial idea to the
integration into your process.

Our philosophy in three words:

Smart Bonding Approach.